

## Classic X86 Mini PC

It adopts all-aluminum alloy structure, fanless and totally enclosed design, light and compact, with low power consumption. It is an industrial product specially designed for a variety of environments. It has rich interfaces, supports expansion, can meet the access of a variety of external devices, and supports 12V-36V wide voltage power supply; The complete machine has good scalability, practicability and EMC compatibility, and is widely used in industrial control, military industry, communication, power and network and other automation fields.

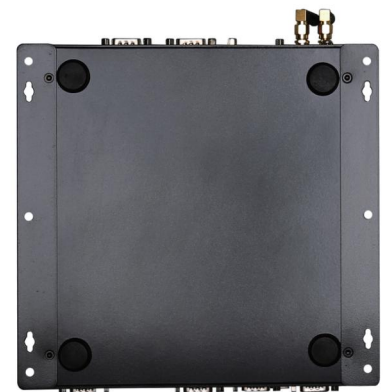
### Features >>

- Delicate and compact appearance, convenient installation
- Self-developed X86 architecture motherboard with multiple options
- Intel Core i7 1215U: 1.7GHz, Maximum RPM: 4.70 GHz
- Fanless totally enclosed design, low power consumption of the whole machine
- High integration, realizing Wi-Fi/Bluetooth/Ethernet triple connection
- Abundant interfaces to meet the needs of various external equipment



### Model >>

Model	Processor
TPC01-WIPC	CX-12U01/i7-1255U



### Installation >>

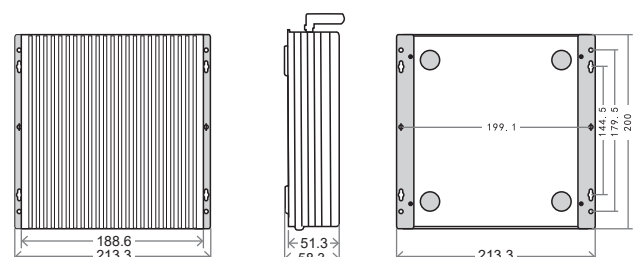


Desktop installation



Rack-mounted

### Size >>



# Specification >>

Configuration	
CPU	Intel Core i7-1255U 1.7GHz
GPU	Intel Iris Xe Graphics 96
Memory/RAM	8GB DDR4 (Supports up to 32GB)
Storage	256GB SSD(optional SSD 64GB~512GB/1T~4T SSD, HDD 500GB-1T)
Wi-Fi	Dual Band 2.4GHz+5GHz
Bluetooth	Bluetooth 4.0(optional)
Operating System	WIN10/11, Ubuntu20.04/22.04/Redhat8.7/Debian12.2/Linux-Mint
Audio chip	Onboard Realtek ALC662 HD audio decoding controller
Chip card	Onboard 1 * Realtek RTL 811E Gigabit network card

Interface Parameter	
PowerSW	1*PowerSW
Power interface	1*Threaded DC port (Diameter: 5.5*2.5mm)
Phoenix terminal	1*12P Phoenix terminal (Power supply/RS232*1/RS485*1/GPIO*5)
USB	4*USB 2.0, 2*USB 3.0
Ethernet	2*LAN, 10M/100M/1000M adaptive Ethernet
HDMI	1*HDMI, Supporting HDMI data output, Up to 4K
SIM	1*SIM, Supporting various formats (Depending on 3G/4G module)
VGA	1*VGA
Audio	1*Audio I/O, support audio input and output
Serial port	4*COM (Default: RS232, optional: RS485)
Wi-Fi antenna	2*Wi-Fi antenna
Grounding	1*GND

Reliability Parameter	
Operating temperature	-10°C~60°C (-20°C~70°C can be customized)
Storage temperature	-20 ° C~70 ° C
Relative humidity	95% non-Condensing

Other Parameter	
Power adapter	24V/4A
Chassis structure	The aluminum alloy on the case surface has good seismic resistance and impact resistance
Color	Gun black
Overall size	199.5*213.1*58.3mm (length*width*height)
Operating Weight	1.9KG
Installation method	Support desktop and rack installation
Warranty	Three years (standard one year free warranty, other policies are negotiable )

# I/O Interface >>

